



Huffman Building Q

12150 Industry Way, Anchorage, AK
Unit 2 - 2,624 sf to 5,741 sf
2 floors office with warehouse

- One dock-high door
- Huffman Business Park
- Professionally managed industrial complex
- Easy access to New and Old Seward Highways
- \$1.00/sf, NNN

Contact

DenaliCommercial.com

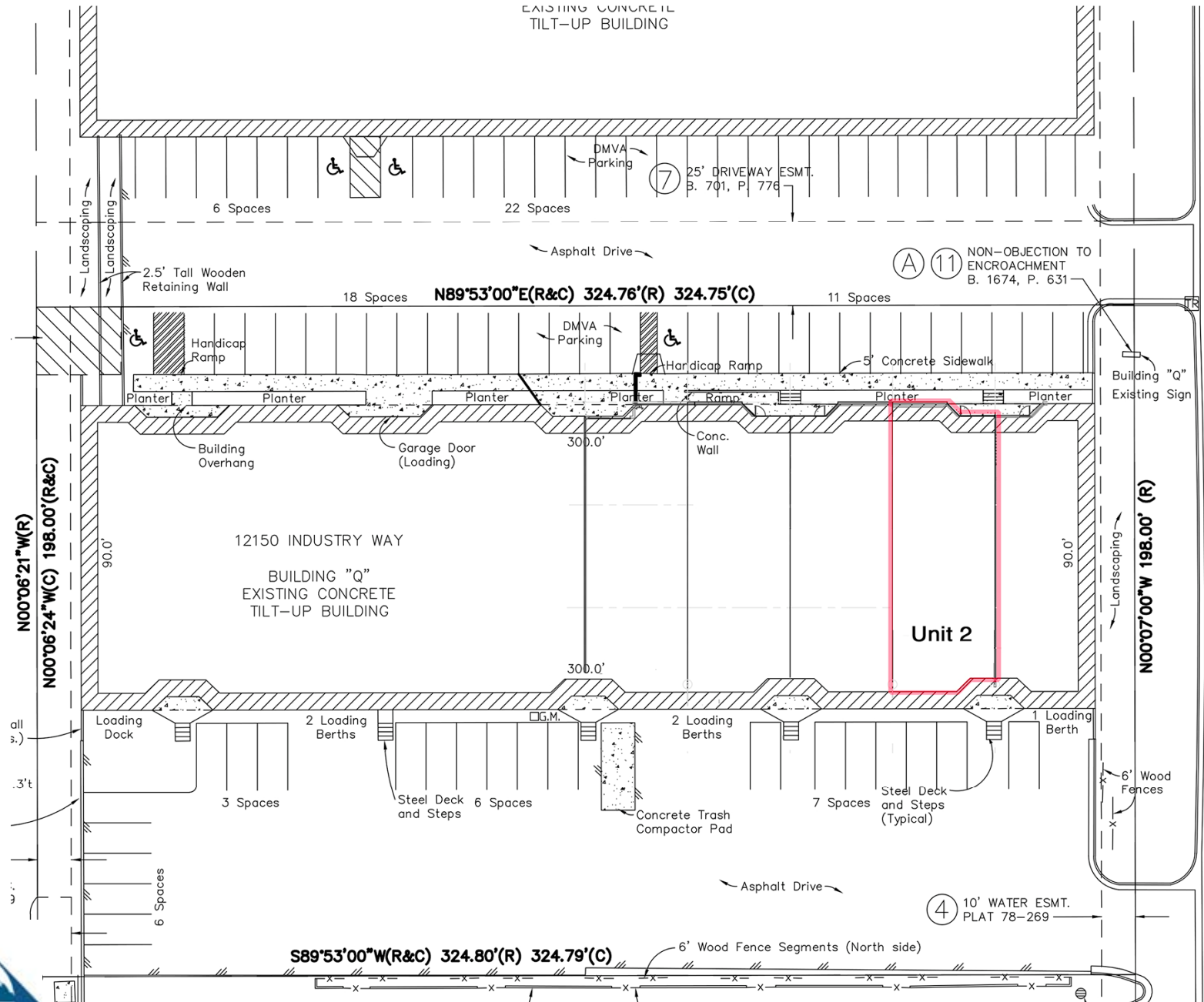
Cyelia A. Gumennik

907-564-2496

NO WARRANTY OR REPRESENTATION, EXPRESS OR IMPLIED, IS MADE AS TO THE ACCURACY OF THE INFORMATION CONTAINED HEREIN, AND THE SAME IS SUBMITTED SUBJECT TO ERRORS, OMISSIONS, CHANGE OF PRICE, RENTAL OR OTHER CONDITIONS, PRIOR SALE, LEASE OR FINANCING, OR WITHDRAWAL WITHOUT NOTICE, AND OF ANY SPECIAL LISTING CONDITIONS IMPOSED BY OUR PRINCIPALS NO WARRANTIES OR REPRESENTATIONS ARE MADE AS TO THE CONDITION OF THE PROPERTY OR ANY HAZARDS CONTAINED THEREIN ARE ANY TO BE IMPLIED.



EXISTING CONCRETE
TILT-UP BUILDING



S89°53'00"W(R&C) 324.80'(R) 324.79'(C)

(4) 10' WATER ESMT.
PLAT 78-269

(A) (11) NON-OBJECTION TO
ENCROACHMENT
B. 1674, P. 631

Unit 2

12150 INDUSTRY WAY
BUILDING "Q"
EXISTING CONCRETE
TILT-UP BUILDING

N00°06'21"W(R)
N00°06'24"W(C) 198.00'(R&C)

N00°07'00"W 198.00' (R)

DMVA Parking
25' DRIVEWAY ESMT.
B. 701, P. 776

Asphalt Drive

6 Spaces
2.5' Tall Wooden
Retaining Wall

18 Spaces
N89°53'00"E(R&C) 324.76'(R) 324.75'(C)
11 Spaces

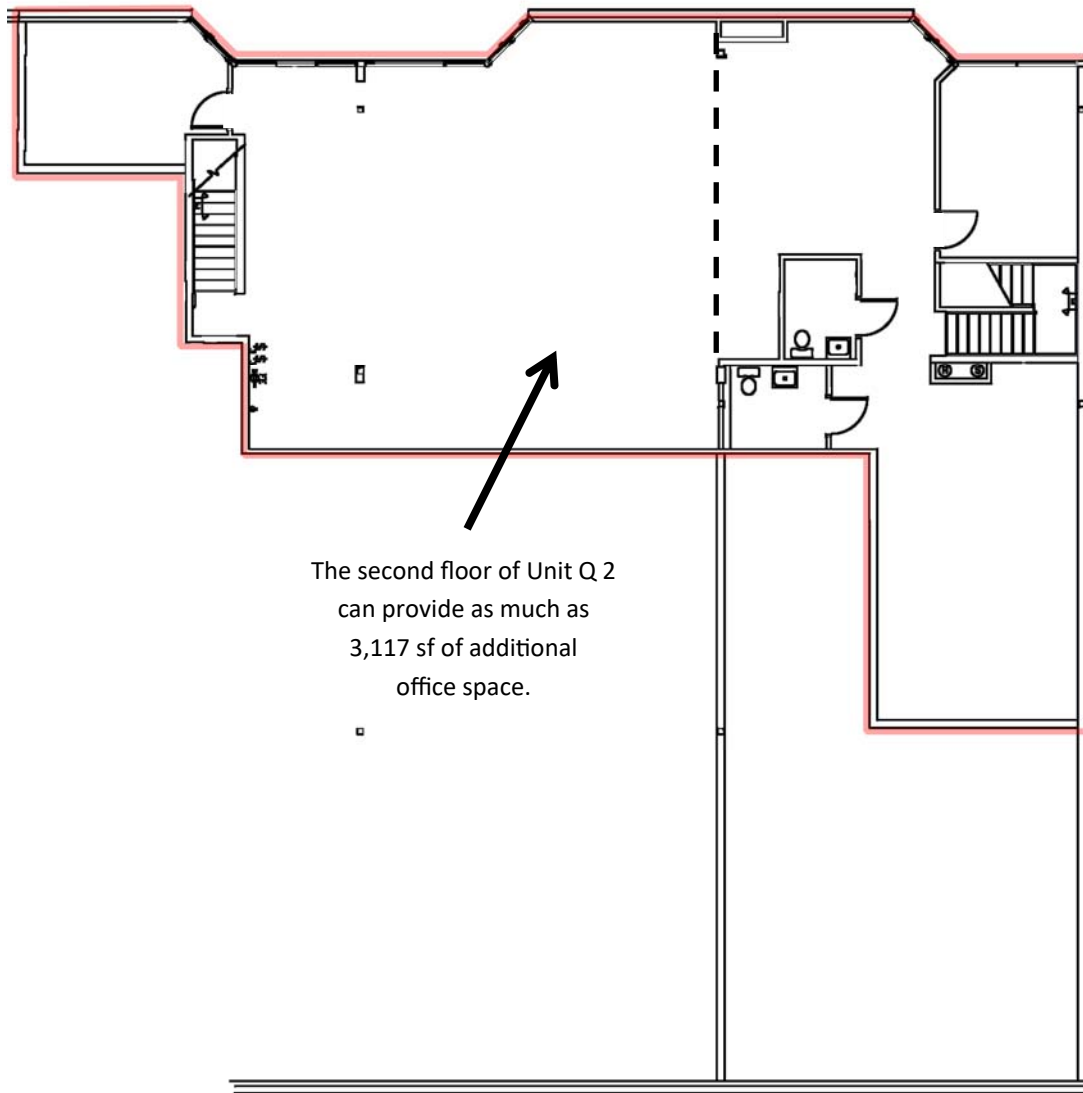
Handicap Ramp
DMVA Parking
Handicap Ramp
5' Concrete Sidewalk
Planter
Planter
Planter
Planter
Ramp
Planter
Planter

Building Overhang
Garage Door (Loading)
300.0'
Conc. Wall
Ramp

Loading Dock
2 Loading Berths
3 Spaces
Steel Deck and Steps
6 Spaces
G.M.
2 Loading Berths
7 Spaces
Steel Deck and Steps (Typical)
1 Loading Berth
6' Wood Fences

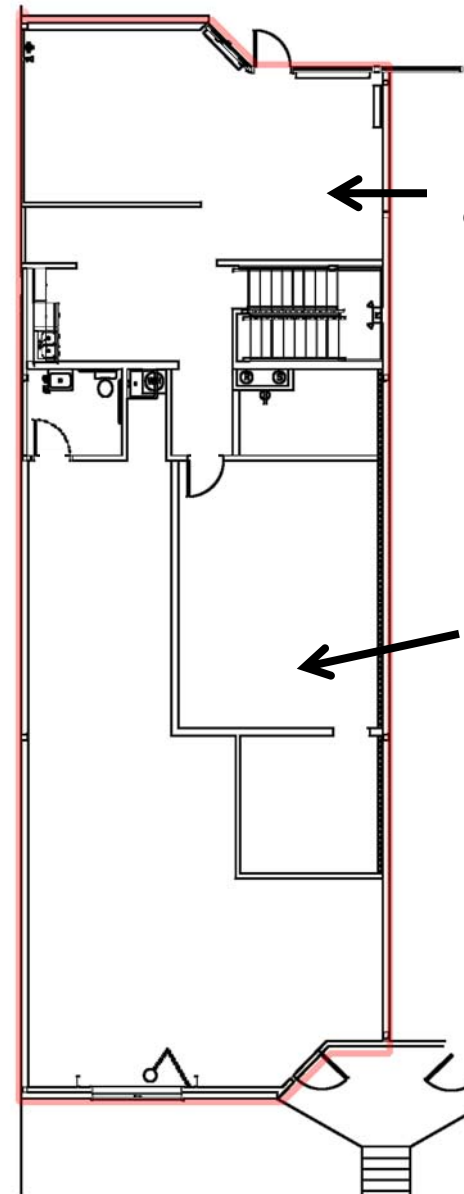
Asphalt Drive

6' Wood Fence Segments (North side)



The second floor of Unit Q 2 can provide as much as 3,117 sf of additional office space.

Unit Q 2 **second floor**
Office = 3,117 sf



Q 2 first floor office = 1,024 sf

Existing conference room can be demolished to create a total of 1,600 sf warehouse

Unit Q 2 **first floor**
Warehouse & office = 2,624 sf

